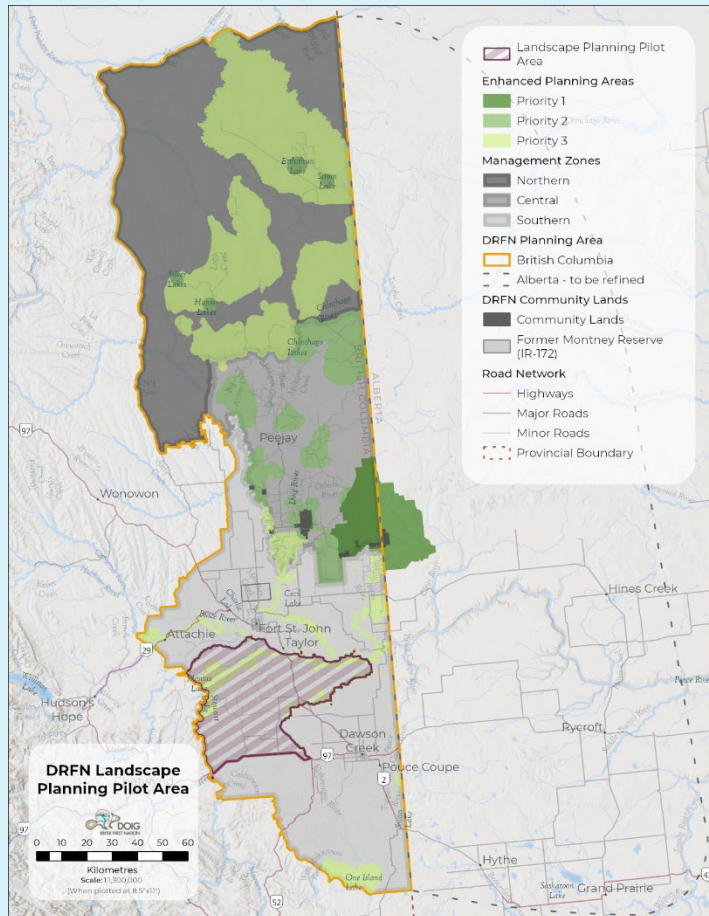


Landscape Level Pilot Project



Pilot Area

The Landscape Planning Pilot Area encompasses the Northern portion of the South Management Zone and includes both Southern High and Southern Low Density Disturbance Subzones.

Purpose

The purpose of the DRFN Landscape Planning Pilot Project (LPP) is to implement elements of DRFN's Land and Resource Management Framework which will test an approach to assessment and management of cumulative effects within a Pilot Area. We will test four elements of the Framework:

- DRFN's Nan wújō t'aa dâah'áa? Land Use Plan (LUP).
- DRFN's Cumulative Effects Management Tool (CEMT).
- DRFN's Modernized Consultation Policy, including Pre-application engagement procedures and consent-based decision-making processes.
- A Mid-Tier Project assessment process for large projects within the purview of the BC Energy Regulator.

The LPP will include testing of the following components of the LUP:

- Management Tools (linear disturbance, ECA, high value forests, priority habitat).
- Management Responses (will be developed together with the province of BC)
- Land Use Planning Policies including the Impact Assessment Policy, the Disturbance, Fragmentation and Connectivity Policy, and others

Scope

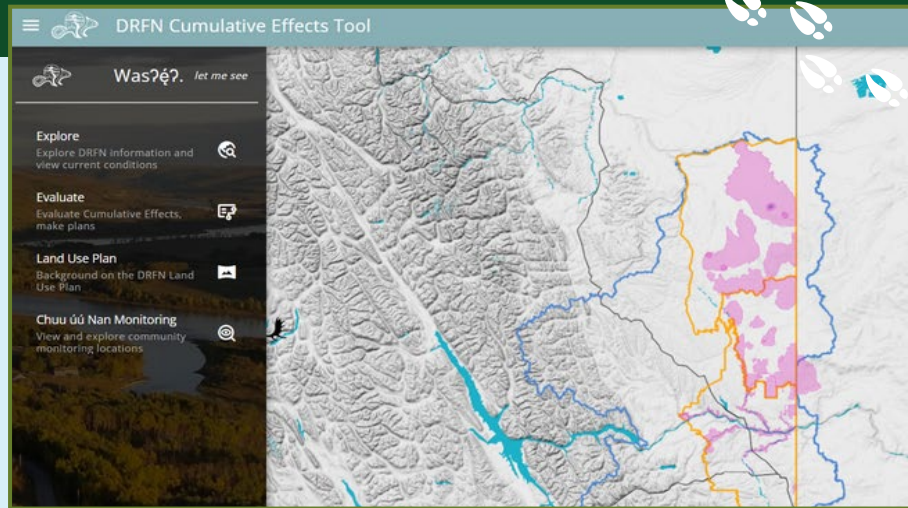
- That the LUP will deliver the management vision established in the plan.
- The planning targets, management tools, management responses, and management objectives will effectively address cumulative effects and support ecosystem-based management
- Improve stewardship through implementation of policies and operational direction for development.



Cumulative Effects Management Tool

We developed tools to support planning and assessments of proposed industrial activities, including a Cumulative Effects Management Tool which may be made available for proponents to proactively determine potential impacts of their proposals on cultural and ecological values.

We intend to have the following available for external users:



Cumulative Effects Management Tool Interface

1

A map to view the LUP zones and the spatial data for the management tools including high value forest, habitat, the current condition within each zone for each of the management tools, and future vision for the management zones.

2

The ability to upload a shapefile and receive the preliminary screening info for that area.

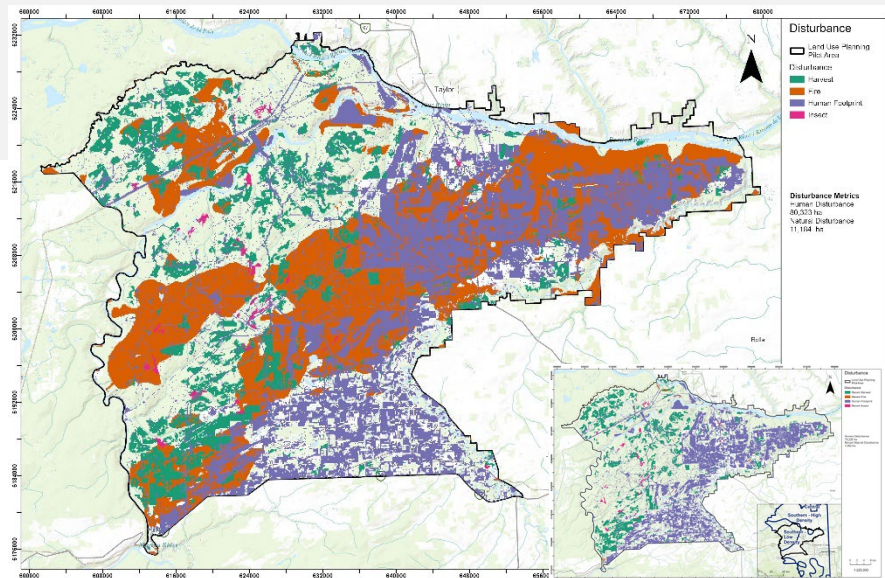
3

In the future: the ability to complete a Cumulative Effects assessment for a project area.

The large spatial scale of the pilot area allows us to evaluate meaningful change while accounting for the cumulative effect of multiple land uses, natural disturbance, and climate change.

The two maps on this page provide an overview of the human and natural disturbances within the pilot area.

Main Map: All Disturbance in the Pilot Area
Subset: Recent Disturbance in the Pilot Area



Collaboration

We are undertaking this Landscape Planning Pilot Project together with the province of BC and industry partners to test elements of DRFN's Land and Resource Management Framework to make sure it is effective before moving towards formalization. We want to get this right

For More Information, Please Contact:

Email: Engagement@doigriverfn.com

Phone Laureen Whyte (250)-794-9727

